

CAMBRIDGE SERIES TWO DOOR BYPASS SLIDING SHOWER DOOR SYSTEM

NEW

USE MONOLITHIC TEMPERED GLASS FOR GLASS THICKNESSES			
1/2" (12 MM)	3/8" (10 MM)	5/16" (8 MM)	1/4" (6 MM)
	✓	✓	

- **Modern Two Door Bypass System**
- **Top Rollers Assure Easy Sliding Action**
- **Minimal Use of Hardware Adds to Visual Appeal**
- **Attractive Polished and Brushed Stainless Steel Finishes, or Matte Black**
- **For Use With 3/8" or 5/16" (10 or 8 mm) Thick Tempered Safety Glass (Not Included)**

The NEW Cambridge Series Two Door Bypass Sliding Shower Door System utilizes a modern top roller system that features four rollers on each door for ease of sliding. This quiet, smooth sliding system is made of high quality stainless steel, thus ensuring easy opening and closing of the doors. The Cambridge Series is versatile in design, able to adapt to full standing showers or above bathtubs. Each kit includes the following: 73" (1854 mm) length stainless steel Header; 8 stainless steel Rollers; 2 Stoppers; 2 Track Holder Fittings for the wall; 1 stainless steel Bottom Guide; 2 each 24" (610 mm) Single-Sided Towel Bars; 2 each 40" (1016 mm) Bottom Door Sweeps; 2 each 80" (2032 mm) length Clear L-Jambes; 1 Tool Kit. The Cambridge Series Bypass Sliding Shower Door System accommodates 3/8" or 5/16" (10 or 8 mm) thick tempered safety glass (not included). Your choice of beautiful polished or brushed stainless steel finish, or matte black allows design options. A 90 Degree Accessory Kit is available for enclosures with a return panel.

STANDARD 180 DEGREE KIT INCLUDES:

- One - 73" (1854 mm) Length of Header Bar
- Eight - Rollers
- Two - Stoppers
- Two - Track Holder Fittings for the Wall
- One - Bottom Guide
- Two - 40" (1016 mm) Bottom Sweeps With Drip Rail
- Two - 80" (2032 mm) Clear L-Jambes
- Two - 24" (610 mm) Single-Sided Towel Bars
- One - Tool Kit

SPECIFICATIONS:

- Glass Thickness:** 3/8" or 5/16" (10 or 8 mm) - (Glass Not Included)
- Material:** Stainless Steel
- Maximum Door Size:** 37" (940 mm) Wide or 84 Pounds (38 kg) for Each Door – Do Not Exceed Either Width or Weight
- Glass Fabrication Required:** One 3/4" (19 mm) Diameter Hole Per Roller; Two 1/2" (12 mm) Diameter Holes Per Towel Bar

FINISHES:



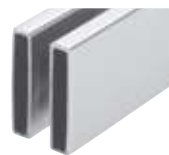
Polished Stainless Steel Brushed Stainless Steel Matte Black

POLISHED STAINLESS CAT. NO.	BRUSHED STAINLESS CAT. NO.	MATTE BLACK CAT. NO.	DESCRIPTION
CAM73PS	CAM73BS	CAM73MBL	Standard 180 Degree Cambridge Kit
CAMH1PS	CAMH1BS	CAMH1MBL	Replacement 73" (1854 mm) Header Bar
CAMR4PS	CAMR4BS	CAMR4MBL	Replacement Rollers (1 Pack of 8)
CAMS1PS	CAMS1BS	CAMS1MBL	Replacement Stoppers (1 Pack of 2)
CAMW2PS	CAMW2BS	CAMW2MBL	Replacement Track Holder Fittings for the Wall (1 Pack of 2)
CAMG1PS	CAMG1BS	CAMG1MBL	Replacement Bottom Guide
BMNW24PS	BMNW24BS	BMNW24MBL	Replacement 24" (610 mm) Single-Sided Towel Bar
P995WS	P995WS	P995WS	Replacement 40" (1016 mm) Bottom Sweep With Drip Rail
DK80L	DK80L	DK80L	Replacement 80" (2032 mm) Clear L-Jamb (2 each)
CAM90PS	CAM90BS	CAM90MBL	Optional 90 Degree Cambridge Accessory Kit

*Call for Replacement 5/16" (8 mm) Bottom Sweep



KIT INCLUDES:



One - 73" (1854 mm) Length of Header Bar



Eight - Rollers



Two - Stoppers



Two - Track Holder Fittings for the Wall



One - Bottom Guide



Two - Bottom Sweeps With Drip Rail



Two - Clear L-Jambes



Two - Single-Sided Towel Bars



CAT. NO CAM90
Optional 90 Degree Accessory Kit for Return Panels

go to crlaurence.com to search for
shower-sliders

SEARCH

532S

or enter the Catalog Number for complete product information

TOLL PHONE: (800) 421-6144
FREE FAX: (800) 262-3299
From Anywhere in the U.S. or Canada

